



Woodward Canyon Artist Series Cabernet Sauvignon



Artist Series #1

Jennifer Winship Mark

woodward canyon

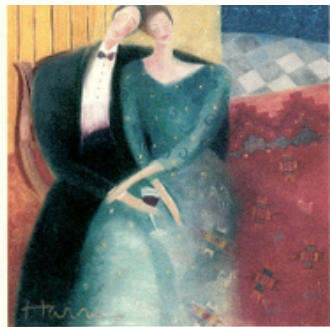
1992

Washington Cabernet Sauvignon
Cannon Ridge Vineyard

Alcohol by Volume 12.7%

Contains Sulfites

1992 Artist Series #1, 13” x 10” commissioned watercolor, 1994, Jennifer Winship Mark, Portland, OR. Jennifer shows at galleries in the Portland area, created a Rose Festival poster that won Best Festival Poster of the Year, sells posters internationally and produces a series of greeting cards. After attending a tasting in Portland, Jennifer contacted Woodward Canyon and offered her services. Unbeknownst to Jennifer, we had been planning a new red wine and were considering a separate label for it. Thus, the “Artist Series” was born.



Artist Series #2

Elizabeth Harris

woodward canyon

1993

1993 Artist Series #2 “Moonlight Becomes You“, 30” x 36” commissioned pastel, 1995, Elizabeth Harris, Walla Walla, WA. Elizabeth grew up in Walla Walla in one of the three houses that her great--grandfather built. Her early life was deeply rooted in her family’s traditions and heirlooms. She attributes the rich colors and patterns, characteristic of her art, to the treasures of her family’s past. Harris received her BA from Whitman College, and later a M. F. A. from Portland State University, Portland, Oregon. Elizabeth lived in Portland before returning home to Walla Walla. Her work is represented throughout the United States and in Germany.



Artist Series #3
woodward canyon
1994
Washington Cabernet Sauvignon

1994 Artist Series #3, 23' x 30' watercolor, Divit Cardoza, Boise, ID. Divit studied art at the University of Oregon until his parents found out he was wasting time with that "art crap." Consequently, he is mostly self-taught. He started out painting abstractly but began working in realism in the early 80's. Most of his work is of traditional subjects (i.e. landscapes, portraits and still lifes). Divit lives and works (in a wine shop) in Idaho. His work hangs in corporate and private collections across the US and has been shown in California, Idaho, Washington and North Carolina.



Artist Series #4
woodward canyon
1995
*Washington Cabernet Sauvignon
Canoe Ridge Vineyard*
Alcohol by Volume 13.4% Contains Sulfites

1995 Artist Series #4, "Indian Summer II", 39" X 27" watercolor, 1993, Judy D. Treman, Walla Walla, WA. Judy was raised in Walla Walla and returned from Kirkland, Washington in the 1980's. After obtaining a master's degree in sociology with a minor in art, Judy kept busy with marriage and home until age 29 when she began pursuing painting seriously. She focuses on watercolors of large still lifes, filled with color. Judy has earned signature membership in the National Watercolor Society, Watercolor West and the Northwest Watercolor Society. Her paintings are included in Splash 3, Splash 4, Splash 5, and Basic Flower Painting Techniques. She now shares the techniques she has developed in her own book, Building Brilliant Watercolors, published in 1998. Her works can be found in collections and exhibitions throughout the county.



Artist Series #5
woodward canyon
1996

1996 Artist Series #5, "Dream Door #3", 40" x 60" encaustic on paper, 1996, Abbey Grosvenor, Sun Valley, ID. Abby paints because she is compelled to do so. She has done so while raising a family and owning and running a restaurant). It was in college and graduate school that she immersed herself fully in painting and moved to non-representational work. This work's medium of encaustic is a thick wax material, technically pigment suspended in beeswax, which is heated and applied with palette knives.



Artist Series #6
woodward canyon
1997
Washington Cabernet Sauvignon
Alcohol by Volume 13.6% Contains Sulfites

1997 Artist Series #6, “San Juan Sunrise“ 16” x 13” commissioned pastel, Clark Elster, Shoreline, WA. Following a 25-year career as a Seattle police officer, Clark discovered pastels and began painting again in 1984. Raised in central Oregon, his introduction to art was via the Famous Artists Correspondence School, followed by art studies at Lewis and Clark College in Portland, Oregon. Clark’s emphasis is on landscapes and marinescapes. His work has appeared in *American Artist*, and has been featured in regional, juried, invitational and one-man shows. He is a founding signature member of the Northwest Pastel Society. Elster also is the author/illustrator of a 100-page book, *Two Americans in Norway*.



Artist Series #7
woodward canyon
1998
Washington Cabernet Sauvignon

1998 Artist Series #7, 20” X 25” watercolor, Sally Augustiny Charlton, Chicago, IL. Sally Augustiny Charlton was born in Ohio and studied at the University of Michigan and The Chicago Academy. She was employed for 20 years at the J. Walter Thompson Advertising Agency in Chicago. Sally was well known in the advertising community for the detail, color and life that she put into her illustrations. In her personal life, she was an accomplished watercolor artist. Sally passed away in 1998 and her good friend, the Art Director for the Auction of Northwest Wines, purchased this piece at her estate sale. It was the centerpiece of the 1998 Auction invitations and catalog and was acquired at that auction.



Artist Series #8
woodward canyon
1999
Washington Cabernet Sauvignon
Alcohol by Volume 13.9% Contains Sulfites

1999 Artist Series #8, “Runners of Splendor” 40” x 30” commissioned acrylic, 2000, Larry Pirnie, Missoula, MT. Larry Pirnie was born in Waterloo, Iowa. His earliest memory of making a picture was drawing the Lone Ranger when he was six years old. He never stopped making pictures of cowboys and horses. At the time in his life that he was ready to make a decision concerning his art career, he had the good fortune to spend a day with Norman Rockwell at his studio. Rockwell’s advice directed Larry to the Pratt Institute in New York, where he earned a BFA degree in 1963. His pictures today have evolved into a more expressive style as he responds to a whimsical mixture of yesterday's fantasies and today's realities. Larry has shown throughout the west in solo and group exhibitions.



Artist Series #9 Squire Broel

woodward canyon

2000

Washington Cabernet-Sauvignon

Alcohol by Volume 13.9%

Contains Sulfites

2000 Artist Series #9, “Ochre Interior (version 1) 15 ¾” x 12”, 2002, Squire Broel, Walla Walla, WA. Squire graduated from Seattle Pacific University with a degree in Studio Art. He then moved to Hong Kong for a year to live and work. Both childhood memories of growing up in rural America and encounters in Asia are fundamental to his current work. Upon moving back to the Northwest, Squire worked at the Walla Walla Foundry as their patineur and bronze coloration specialist for six years. Squire is now focused on his own work full time. He uses his education and knowledge of art history--as well as his experience with bronze coloration--to communicate with each viewer through painting and sculpture the importance of everyday objects, images, and emotions. Squire’s bronze tiles also can be seen on the wood-fired oven on the patio behind the tasting room.



Artist Series #10 Frank Boyden

woodward canyon

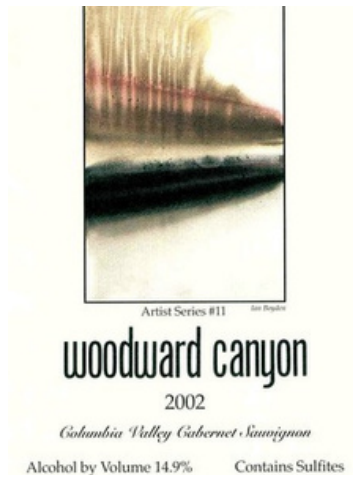
2001

Columbia Valley Cabernet-Sauvignon

Alcohol by Volume 14.2%

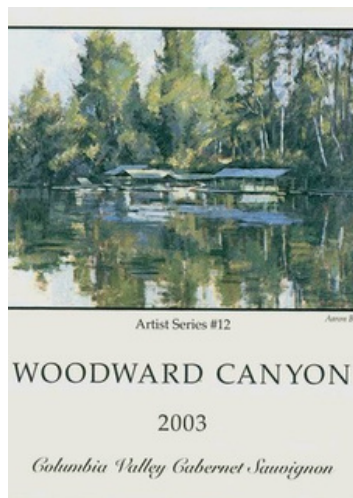
Contains Sulfites

2001 Artist Series #10, Untitled (owl) 7” x 6 ½ “, Frank Boyden, Otis, OR. Frank Boyden, a native Portlander, is an internationally renowned potter and sculptor whose parents responded to his interest in art by exposing him to such Northwest artists as Mark Tobey and Morris Graves. As a teenager, Boyden’s trips up remote inland rivers led him to discoveries that made him ever after devoted to symbols of ancient cultures. After undergraduate work at Colorado College, Boyden received a M.F.A. at Yale. At that time, in the late '60s, he was a color-field painter. As a potter, he is chiefly self-taught. Soon after returning to the Northwest, he conceived and built the Sitka Center for Art and Ecology, a retreat and workshop for artists, and later the Margery Davis Boyden Writer’s Residency Program, Frank’s pieces appear in collections and galleries across the world. He has completed numerous public commissions. His “Columbia Blade” bronze sculpture can be seen on the lawn in front of our Tasting Room.



2002 Artist Series #11, “Road Through Sleep” 38” x 48”, ink on paper, 2003, Ian Boyden, Walla Walla, WA.

Ian Boyden is a practicing painter, calligrapher, seal carver, printer, and producer of other objects associated with calligraphy. His seals and calligraphy have been exhibited in China, Taiwan, Korea, and the U.S. Boyden received a B.A. in Art History and East Asian Studies at Wesleyan University and a M.A. in the History of Art at Yale University. Since 1998, Ian has served as the Director of Sheehan Gallery and Lecturer of Art History, Whitman College, Walla Walla. Ian is also the founder and proprietor of Crab Quill Press, a natural extension of his lifelong interests in paper, stones, the printed image, and the calligraphic line.



2003 Artist Series #12, “Boat Houses on Sand Creek” 34” x 25”, acrylic, 1993, Aaron Burgess, Walla Walla, WA.

"I was born in Seattle, Washington in 1956 but I've lived off and on in Walla Walla most of my life. My father, an artist/painter, too, taught me how to draw and introduced me to the GreatMasters. When I was 15 years old, with my parents blessing (andIvan Illich's!), I decided to quit school and devoted myself to drawing, painting, reading and other studies. The great French painter, Cezanne, in a late letter, asked, "Is art a kind of priesthood where only the most pure of heart are allowed to enter?" Indeed, great works of Art are truly Transcendent. Elevated. Profound: The "Winged Victory of Samothrace" and Rembrandt's "Portrait of Hendrickje Stoffels" in the Louvre, Cezanne's "Montagne Sant-Victoire" in the Philadelphia Museum. For myself, I continue to study the Great Masters and Nature and try to add a link of my own to the Art of Painting." — Aaron Burgess



Artist Series #13 Todd Telander

WOODWARD CANYON

2004

Columbia Valley Cabernet Sauvignon

2004 Artist Series #13, "Coming Home: Red-Tailed Hawk," acrylic, 2006, Todd Telander, Walla Walla, WA. Art and the study of nature have been dual passions for Todd Telander since his childhood in rural Northern California. He began to seriously focus on art and illustration as a career while attending the University of California at Santa Cruz. While earning degrees in Environmental Studies and Biology, he completed a graduate-level program in scientific illustration, and immediately began work as a freelance artist on a national and international level. He has since studied fine art independently and was awarded an artist's residency at Rocky Mountain National Park in Colorado. For the past 15 years he has made his living as a freelance scientific illustrator and wildlife artist. Telander's work has been published and reproduced for multiple applications, and his clients have included book and magazine publishers, retailers, environmental and educational institutions.



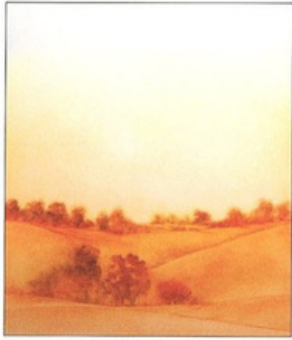
Artist Series #14 Jean Christofori Howton

WOODWARD CANYON

2005

Columbia Valley Cabernet Sauvignon

2005 Artist Series #14, "Stop the Blue", 4-29" x 21", oil, Jean Christofori Howton, Hat Rock, OR. Jean Christofori Howton is dually located in Oregon and in Normandy, France. Over the years, Jean has produced multitudes of paintings and drawings which are displayed in private collections worldwide. She has developed a reputation through her exhibitions in the US and Europe. Jean has produced a wide variety of subjects from representational to abstract. She has the ability and the skill to manage different types of mediums and subjects. All of her works are the result of soft, yet solid and sensitive inspiration. The evolution from earlier works shows her eagerness to evolve within her own style. The quality and the detail, the richness and subtly of the colors, gives strength to these paintings.



Artist Series #15 Tyrell Collins

WOODWARD CANYON
2006
Washington State Cabernet Sauvignon

2006 Artist Series #15, "San Gemanimo Rd", 14" x 16", oil on aluminum panel, 2008, Tyrell Collins, Berkley, CA.

Tyrell is generally influenced by the 17th Century Dutch approach to landscape, and at the same time, has been playing with the suggestion of the etching plate created by her oil-on-aluminum technique. The scenes come from imagination. Though many of the titles are the names of actual places (exits seen from the highway), they are meant to suggest a brief, possible encounter with an unknown place. Reflecting on our subjective experience of the external environment, she explores the territory of her general impressions, memories and imaginings of places passed. As is the case with many painters, much attention and interest are focused on the phenomenon of light. In 2005 she purchased some aluminum panels and immediately discovered that the aluminum provided a wonderful drawing environment. The metal shining through the paint suggested etching plates, and the work itself had an etching-like quality. The surface of the metal provides one big challenge: each painting must be in one sitting. Once the paint has dried, wet paint cannot be added. If it is, the wet paint will remove the dry paint.



Artist Series #16 Irene Yesley

WOODWARD CANYON
2007
Washington State Cabernet Sauvignon

2007 Artist Series #16, "The Palouse" 4' x 4', acrylic paint on canvas on panels, 2009, Irene Yesley, Bainbridge Island, WA.

The landscape of Spokane, Washington, where Irene grew up, has always influenced her work. The city is surrounded by pine trees, lakes and a ski mountain. When she left that area at the age of 20, she took these memories with her. At Arizona State University, she earned an MFA in printmaking, then changed media and began working on a six-foot Cranbrook loom. Irene wove many commissioned rugs and tapestries, but eventually became frustrated with the restraints of weaving. She didn't leave fiber arts behind, however, as her current work shows traces of these years working with fiber. After selling her loom, she spent two weeks at Haystack School of Arts and Crafts and began experimenting with new materials and enjoyed the freedom of working on paper, unstretched canvas and wood using layers of silk and acrylic. Living in the intense light of sunny homes in New Mexico and the Turquoise Coast of Turkey

for years led her to search for a way to include more luminosity and depth in her pieces. Irene discovered the light-filled, dimensional feeling she wanted by painting images on acrylic sheets and stacking them to make one piece, building complex images with color, pattern and shadow as the light and the viewer's perspective change. In her new work, she is painting with acrylics on top of silk which is permanently adhered to wood. It is a continuation of Irene's interest in layering and creating luminosity by glazing. Her work appears in collections and is shown throughout the U.S.



Artist Series #17 Lisa Snow Lady

WOODWARD CANYON
2008
Washington State Cabernet Sauvignon

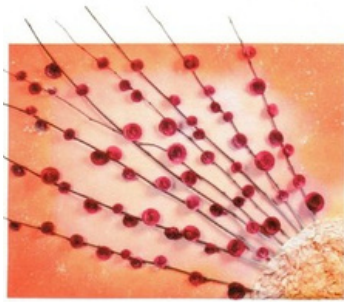
2008 Artist Series #17, 'Helebores - Ivory Prince', 1' x 1', 2008, Lisa Snow Lady, Seattle, WA. Lisa's love of botanical form and education in ornamental horticulture influence her paintings and mixed media prints. In those works of richly textured layers of paper, ink and paint, flora serves as a metaphor for hope, rebirth, and renewal. Her recent travels to Turkey, as well as a self-directed artist residency at Centrum in Port Townsend, Washington, have rekindled her interest in sense of place and a desire to explore landscape and architecture as well as botanical themes.



Artist Series #18 Jared Rue

WOODWARD CANYON
2009
Washington State Cabernet Sauvignon

2009 Artist Series #18, 'Rushing Falls', 30' x 24', oil on canvas, 2011, Jared Rue, Seattle, WA. When interpreting a landscape, Jared often tries to find modern perspectives. His work has evolved from painting distant landscapes and underwater landscapes to his current compositions of 'in-the-forest', 'water bank', and 'macro' landscapes. His work, he says, at times leans towards the abstract yet still evokes a transcendent and genuine feeling of being able to enter, or step into, the paintings themselves - whether physically or mentally. The challenge is to create balance and contrast between light and dark, traditional and modern, boldness and serenity while at all times maintaining honesty.



Artist Series #19

Taras Lesko & Friends

WOODWARD CANYON

2010

Washington State Cabernet Sauvignon

2010 Artist Series #19, “Untitled”, paper roses, branches, cloth and oil on canvas, 2012 Taras Lesko & Friends, Seattle, WA.

Born in 1982, originally from Ukraine, currently living in Seattle with his wife and cat is a Graphic Designer by day and Visual Artist by night, with a formal education in Visual Communications. He has been doing design work professionally since 2002, first in web design, then in video game design, and now his papercrafting hobby is beginning to take a turn for yet another possible career path. Through his Visual Spicer business, Taras engages in 3D Design, Branding, Collaboration, Flash Design, Graphic Design, Illustration, Info Structure, Motion Graphics, Painting, Photo Manipulation, Photography, Print Design, User Experience and Web Development.



20th Anniversary Artist Series

Melissa Webster

WOODWARD CANYON

2011

Washington State Cabernet Sauvignon

2011 Artist Series #20, “Woodward Canyon Vineyard #2”, 15” x 19”, 2013, Melissa Webster, Walla Walla, WA.

Thirty years ago I was asked to design Woodward Canyon’s first label. A few local wineries were just beginning to market at the time and I was very pleased to be a small part of that dream. When approached this spring about creating the 20th Anniversary Artist Series label, of course I was eager to join the project. Thirty-six years ago when I moved to the Walla Walla Valley, I was struck by its beauty, health, and natural richness. I was trained in the arts and this area became a perfect setting for my work. Through primarily wood block printmaking, painting, and pastel, I’ve treated subjects from nature and my life, representing them both directly and metaphorically. The painting done for this anniversary label is in the tradition of my landscapes of this area, emphasizing space, color, and abstract design. I will be very pleased if it reveals my familiarity and love for Walla Walla Valley. Melissa Webster holds an M.A. in Art History from the University of Washington, a B.A. and major in Art from Westminister College, Pennsylvania, and completed coursework in Art Education in Wisconsin, Minnesota and Ohio. She was an instructor in Art and Art History at Walla Walla Community College for twenty years and for two years at Walla Walla University and has been exhibited since 1980 in solo and group shows in Walla Walla, Seattle, Portland, Pendleton, and New York.



2012 Artist Series #21, "Sleeping Beauty", oil and charcoal on canvas, 48" x 36", Katherine Ace, Portland OR.

Katherine Ace was born in Chicago in 1953 and received a BA from Knox College, Illinois, in 1975. She works in alkyd/oil on canvas. Between 1974 and 1990 she lived on three US coasts, in two mountain ranges, in remote rural rentals, in major cities and never in one place for long. Her continuing eclectic education consisted of pursuing a smorgasbord of work: a street portrait artist in New Orleans, a potter in Vermont, commissioned copyist, corporate portraitist, advertising/ magazine/ book and textbook artist. In January 1990 Ace moved to Oregon and established a permanent studio. She has had 32 solo shows since 1992. She is interested in complex story telling using cultural myths and histories that reach back into our collective and personal pasts. Figures and still life figures evolve as open ended metaphors for concepts and environments that are themselves also metaphors, and therefore fold - like fabric, time, or paint - back in on themselves. Like a poem, a painting is a surface. The depth is in the surface (oddly). It sort of dawns on you - like the way one remembers a dream sometimes, in fragments that float up all through the day, assembling themselves oddly, disturbingly.



Artist Series #22

WOODWARD CANYON
2013

Columbia Valley Cabernet Sauvignon

2013 Artist Series #22, "A Glimpse", encaustic on wood, 17.5" x 24", Dianna Woolley, Walla Walla, WA.

With her work, Dianna seeks to waken a curiosity from others about what the work stands for, where the color, the marks, the medium, the surface components all begin. By creating two dimensional pieces of art, she creates work to fulfill a personal yearning for creative engagement/dialogue. She wants her work to lead to engagement with others. After years of working with oil and acrylics producing landscapes, in 2008 work gave way to an interest and all out love affair with the ancient medium of encaustics, i.e., liquid beeswax, heat sources, and cradled panels. Dianna has since exhibited encaustic work in numerous local exhibitions as well as national juried competitions. She has participated in 5 productive and regionally well received solo exhibits in the Pacific Northwest 2011-2015.



Artist Series #23

Lynda Lowe

WOODWARD CANYON
2014

Columbia Valley Cabernet Sauvignon

2014 Artist Series #23, "Release", watercolor, oil paint, wax on panel, 36" X 35", Lynda Lowe, Gig Harbor, WA.

After completing an MFA at Indiana University, Lowe taught for fifteen years in higher education and graduate studies at Northern Illinois University and Wheaton College. In 1998 she left her academic position and began painting full-time. Lynda's paintings are widely exhibited nationally in galleries and museums. Lowe's has had over forty solo exhibitions and been included in numerous group shows. Her work can be found in many notable private and public collections. Taken as a whole, her work is meant to provide an opportunity for reflection, suggesting that no thought or thing presents itself as utterly passive or inert, but is charged with content, connection, and a sentient presence. Many of the paintings are infused with an interest in the relationships between art and science, perception and consciousness. The natural environment and her travels abroad also profoundly impact her thinking and choice of themes, investigating what intrinsically connects us to the larger human experience and to the surrounding world.



Augusta Sparks

Artist Series #24

WOODWARD CANYON
2015

Washington State Cabernet Sauvignon

2015 Artist Series #24, "FuR Canyon" photograph, Augusta Sparks Farnum, Walla Walla, WA.

Born into a family of artists in New England, Augusta Sparks Farnum left for the west as a 5th generation photographer, and graduate of Bard College's photography program. In the first years, as a mother, she stayed creative - documenting the messes made by life, drawing on the walls surrounding her children, running a floral business, and founding the art education Carnegie Picture Lab non-profit. Now, she constructs art to redefine spaces, to reflect where she has been and where she wants to be. "Upon being commissioned, I began a photographic dowsing, if you will, of the WW Valley and the property of Woodward Canyon. Keeping myself open, without ego, I photographed the visual vernacular of my own allegories. The valley quietly holds, within its babble and commerce, fabled and surreal landscapes. The dry wheat and vineyard property has become a mythical place of land and sea, mixing the owner's origination story."



Les Paul Postma

Artist Series #25

WOODWARD CANYON

2016

Washington State Cabernet Sauvignon

2016 Artist Series #25, "Cold-Blooded Morning Blues,"

Les Paul Postma, Walla Walla, WA.

Les Paul Postma was born at high-noon on December ninth of 1981, the son of two minstrels, along the intersecting lay lines of interstate 80 and us highway 191, deep in the heart of the Red Desert in southeastern Wyoming. A rural upbringing inspired within him a deep love and respect for plants, animals, and all aspects of the natural world. Ideas about artistic expression of that respect flourished during his primary years, which were spent nestled in the prairie valleys west of the Wind River Mountain range, influenced by free thinkers, artists, and strong country people. When Les Paul came of age, he chased love and the spirit of creativity to another beautiful valley, northwest of the Blue Mountains, and found a nurturing environment in the fine art department of Whitman College. While at Whitman, he refined his artistic techniques and further studied environmental conservation and the natural world. After completing his BFA in studio art in 2004, he joined the Walla Walla service industry community and focused heavily on culinary arts while simultaneously continuing his professional art career. Since 2016, Les Paul has focused primarily on visual art and his work has been professionally represented in Arizona, Wyoming, and Washington.



Debra Van Tuinen

Artist Series #26

WOODWARD CANYON

2017

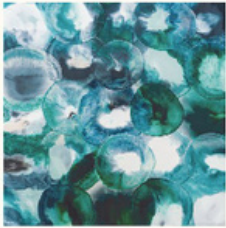
Washington State Cabernet Sauvignon

2017 Artist Series #26, "Swirl", acrylic / oil 60" x 60".

Debra Van Tuinen, Olympia, WA.

Van Tuinen's career has spanned 40+ years as a painter, printmaker, teacher and art advocate. She says "from my first romantic realization that I wanted to be an artist, my life path has been set on a single course. In a career spanning more than forty years, this path continues to evolve in response to my personal landscapes". Her vision and innovative use of materials has been recognized by private, corporate and public collections throughout the United States, Canada, Asia and Europe. She was invited to the Florence Biennale in 2004 and selected for Art in Embassy 2009-2011 and 2016. Her work was recently published in the 100 Artists of the Northwest and included in the Seattle Art Fair, Miami Basel and NYC Red Dot, Palm Spring International,

Affordable Art Fairs in NYC and Miami and Prints Fairs in NYC and Boston. Her collaborations with Oehme Graphics in Steamboat Springs produced new prints that are a combination of watercolor monotypes and solar etching plates.



WOODWARD CANYON

ARTIST SERIES #27
CABERNET SAUVIGNON
WASHINGTON STATE | 2018

2018 ARTIST SERIES #27, “Lush”, Encaustic 1’ x 1’, Jodie Stejer, Sandpoint, ID.

Jodie Stejer is an Encaustic artist: applying a fired torch to fuse together beeswax, resin, pigments and shellac to create abstract paintings inspired by the emotions within her as well as the world around her. Jodie moved from her hometown of Corvallis, Oregon to play volleyball and attend Whitworth University. After college she married her husband John, had two kids and worked as an Interior Designer for over 20 years. Oil and acrylic painting had always been a hobby, but upon becoming an “empty nester” Jodie knew she wanted to pursue Encaustic art full time. She moved into a studio in downtown Sandpoint, Idaho. Layer by layer, letting the aesthetics take place, she allows the stories of her world to reveal themselves. It’s the most vulnerable way for Jodie to communicate to her audience. Encaustic painting is a passion which Jodie is continually engaged in and captivated by. She’s deeply fascinated with the movement of wax, the process of constantly developing her encaustic skills and also learning from the artist community.